

4



State show and setting scheduled >>>>



5

APP Display Description >>>>

- 1 Blue back light: The device is ON.
- 2 Gray back light: The device is OFF.



Working state

Off state

6

Questions >>>>

My device on the app stays "Off line"?

> The new added device needs 1min to connect to WiFi and the Internet. If it stays off line for a long time, please judge the problem by the WiFi LED status: WiFi LED quickly blinks one time every second, device failed to connect to your WiFi; failed to connect to your WiFi:

- 1 Maybe you have entered wrong WiFi password.
 - 2 Device is too far away from your WiFi. Please take it closer.
 - 3 Device can not be added to the 5G-wifi-router, only the 2.4G-wifi is ok.
 - 4 Make sure your router is MAC-open.
- > If still failed, try to open a mobile hot spot and add again.
WiFi LED quickly blinks twice every second:
Device has connected to WiFi but failed to connect to server.
Please check your network connectivity.

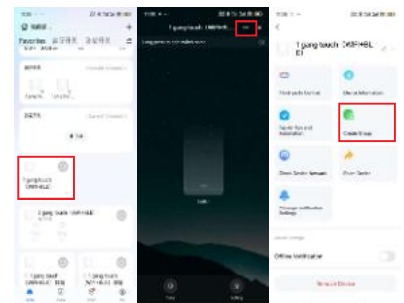
Specification >>>>

- 1 Rated Power: M2500W
- 2 Rated Voltage: AC100-240V
- 3 Rated Frequency: 50Hz/60Hz
- 4 Dimension: 118*74*33mm

Please read the instructions carefully before installation. The manufacturers will not be responsible for any failure operations not following the instructions. responsible for any failure operations not following the instructions.

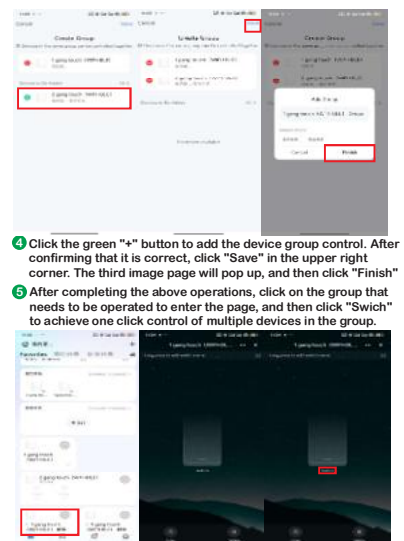
7

Group Control >>>>



- 1 Firstly, add the devices that need to be grouped. The homepage will display the devices that have been added.
- 2 The homepage will display devices of the same model available for creation. Click on one of the devices to enter the page, and then click on the "... " in the upper right corner of the page to jump to the third image page.
- 3 After entering the third image page, click "Create Group" to jump to the Create Group operation page.

8



- 4 Click the green "+" button to add the device group control. After confirming that it is correct, click "Save" in the upper right corner. The third image page will pop up, and then click "Finish"
- 5 After completing the above operations, click on the group that needs to be operated to enter the page, and then click "Switch" to achieve one-click control of multiple devices in the group.